

H2Ohio Program Update

Ohio Lake Erie Commission

Terry Mescher & Clark Hutson

March 8, 2023

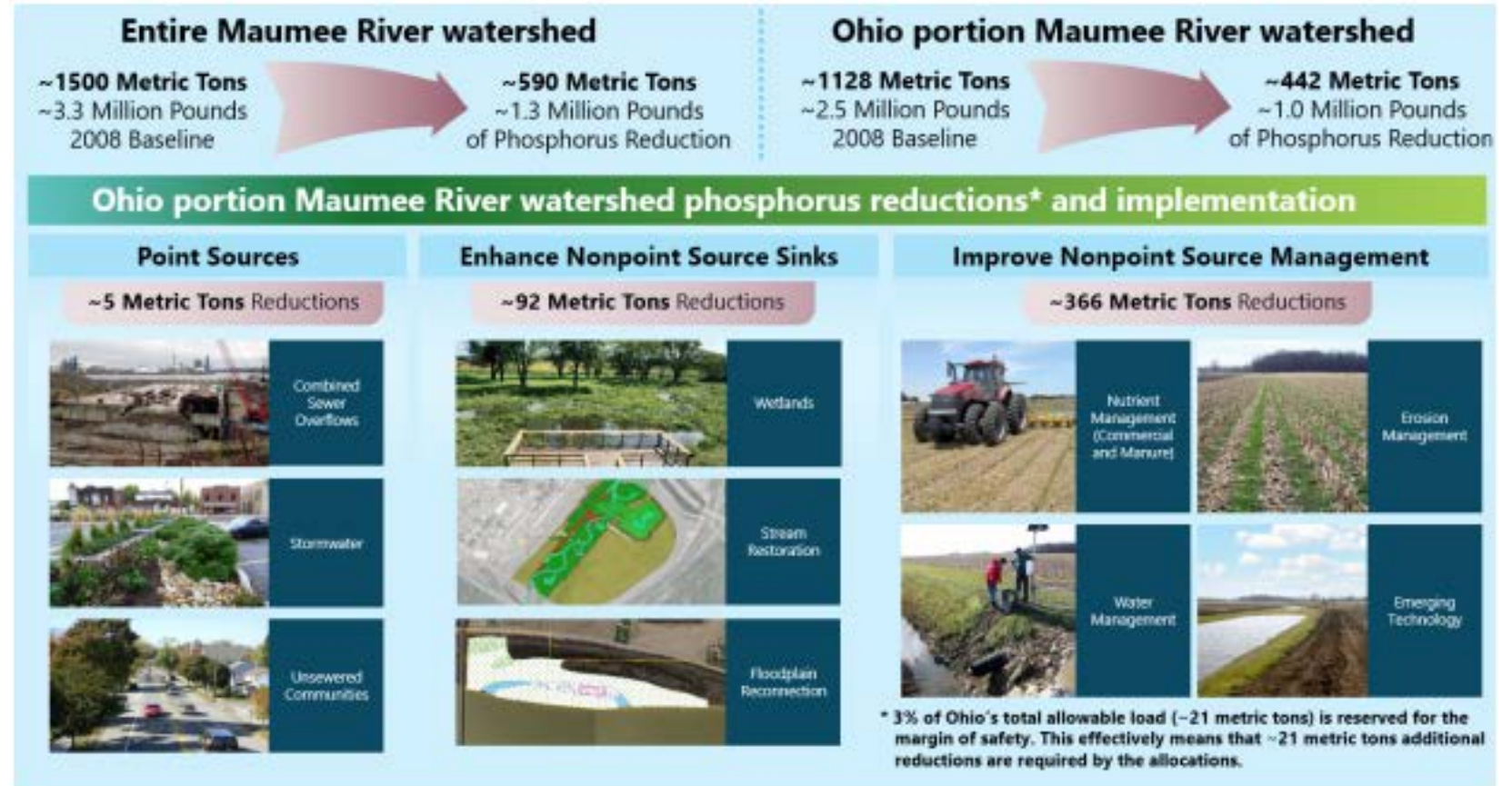


Department of
Agriculture



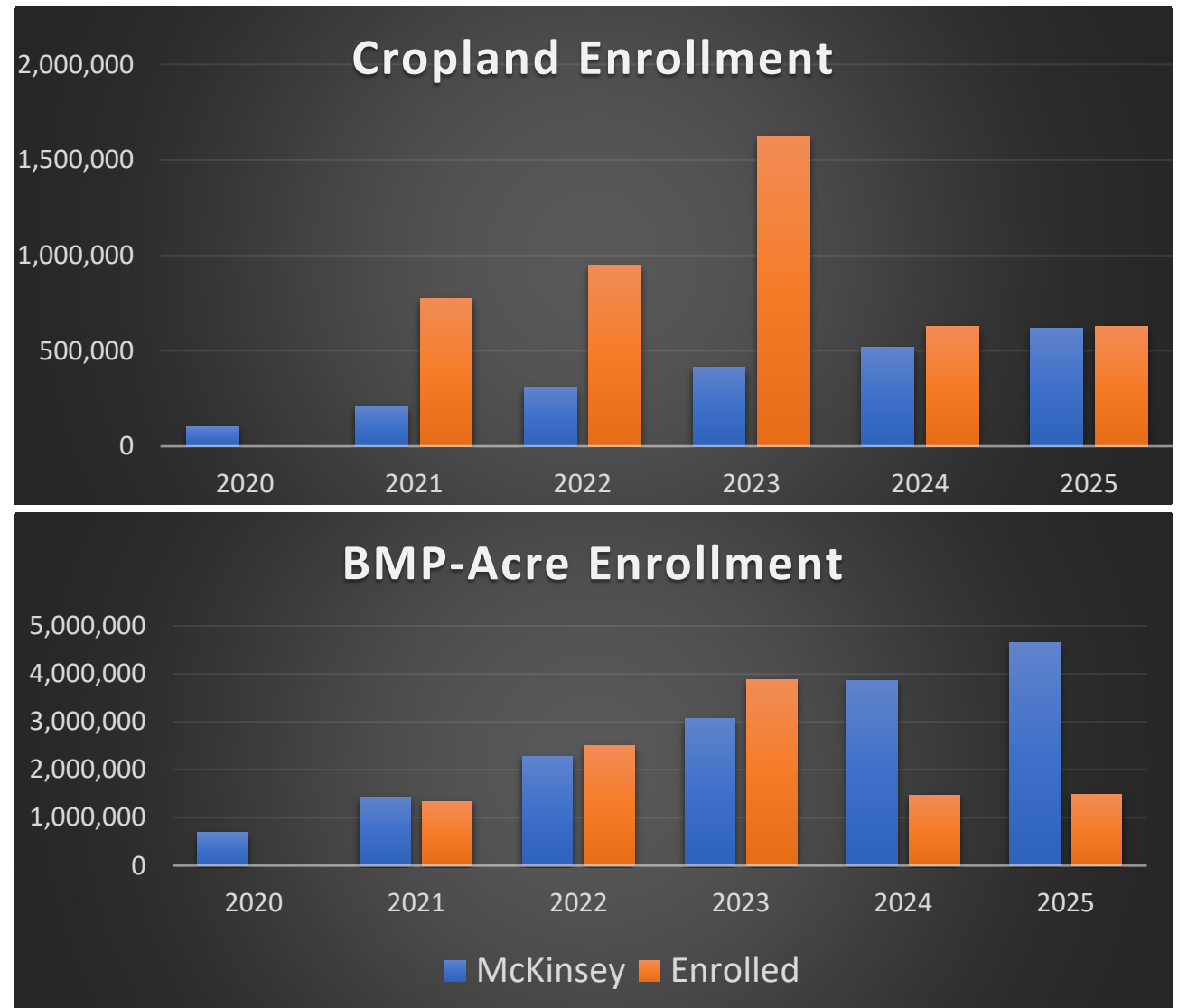
Ohio's Phosphorus Reduction Goals - Maumee

- 40% Phosphorus reduction in annual loads in WLEB
- Ohio's baseline load is approx. 2.5 million pounds annually
- Ohio's 40% reduction results in a reduction of roughly 1 million pounds
- Load reduction assigned to agriculture NPS is approximately **800,000 pounds annually**



Cropland Enrollment & Participation

- A comparison of current enrollment vs targets established in the McKinsey plan indicate reduction goals are attainable
- Targets for some practices are exceeded while others are just short of established program goals

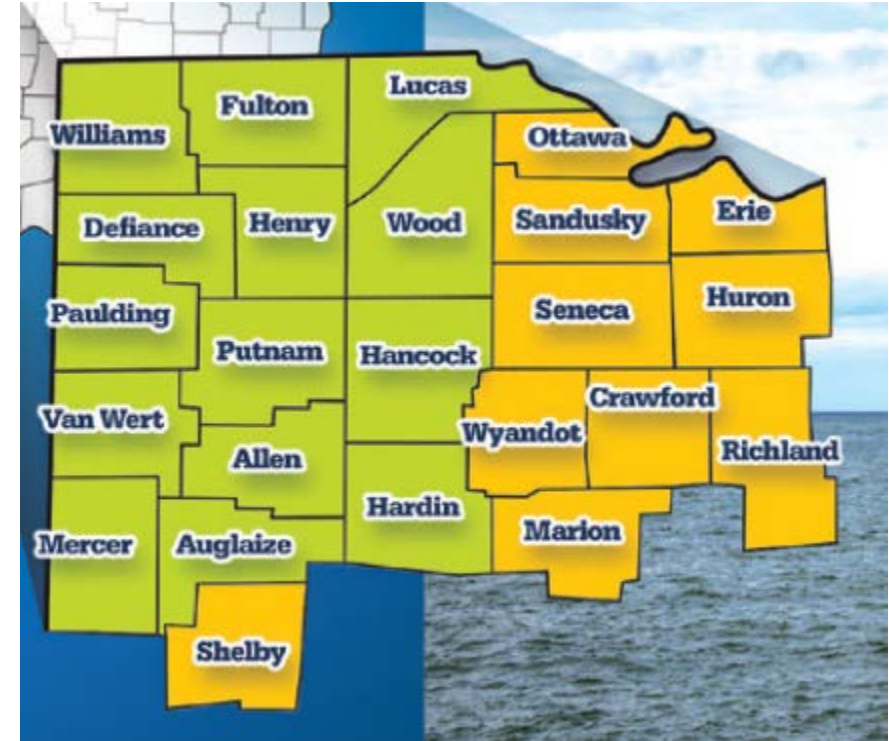


Department of
Agriculture



Ohio's Phosphorus Reduction Potential

- Current enrollment includes adequate practices to meet original P reduction targets
- Practice implementation is the key to achieving goals set within our original plans for H2Ohio
- Evaluation of current practice standards are currently underway, in order to acknowledge alternative methods to achieve practice goals and increase practice adoption

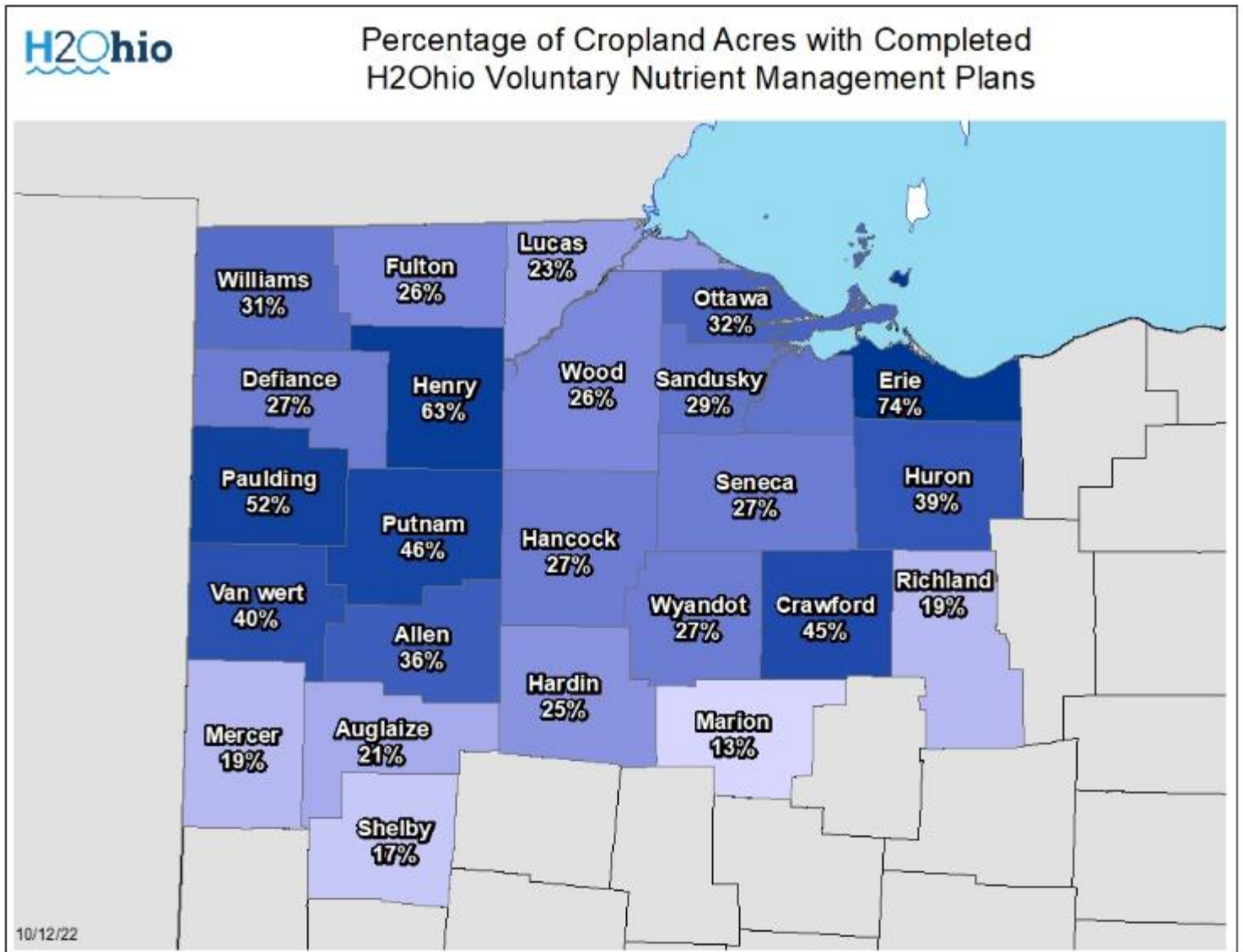


Department of
Agriculture

H2Ohio

H2Ohio Program – Program Interest

- Producer interest in the H2Ohio program has exceeded all expectations
- The figure to the right displays the percentage of cropland with an approved VNMP across the H2Ohio project Area



Department of
Agriculture



Current H2Ohio Program - Enrollment

Maumee Watershed Project Area

- **ENROLLMENT** - 920,000 acres of cropland (~34%)
- **VNMPs** – Verified implementation
 - 887,000 acres in 2021 (Complete/Paid)
 - 565,000 acres in 2022 (Complete/Paid)
 - **353,000 acres in 2022 (In Progress)**
- **CONTRACTS** – Approximately 1600, practices through crop year 2023

WLEB Expansion Project Area

- **ENROLLMENT** - 620,000 acres of cropland (~37%)
- **VNMPs** – Nearly 540,000 acres reviewed, and approved plans developed
- **CONTRACTS** – Approximately 800, practices through crop year 2025



H2Ohio Program – Funding

- H2Ohio funds for the current budget FY '23 are obligated to funding practices in the WLEB project area
- Funding request in the Governor's biennium budget for FY '24 & '25
 - ODA - H2Ohio Cost Share - \$69,000,000 for each year
 - This is a net increase of \$10,000,000 in H2Ohio Funding for Agriculture
 - ODA - H2Ohio District Assistance - \$7,000,000 per year
 - 3.5 Million increase is District Assistance part of which would be statewide
- Actual program offering will be dependent on funding established in FY 24/'25 budget which would be effective July 2023



Department of
Agriculture



H2Ohio Program – Funding

Western Lake Erie Basin

- **Grow Current Footprint Beyond 1.5 million Acres**
 - Accept applications from for H2Ohio BMPs for '24-'26 across the Maumee Project Area
 - Promote contract extensions for existing WLEB expansion area contracts to include '26 practices
 - Accept new applications from the WLEB expansion area for '24-'26 BMPs

Outside WLEB

- **Promote VNMP development across 500,000 acres**
 - Take applications for VNMP development across the remainder of Ohio
 - Build nutrient management & agronomic knowledge within SWCD staff
 - Build relationship between SWCD personnel and local consultants, agronomists, and ag retailers

** Plans are dependent on H2Ohio Funding in the '24-'25 biennium budget*



Department of
Agriculture



2023 & Beyond H2Ohio Initiatives

- H2Ohio Program software integration
- 2-Stage Ditch Construction
- Demonstration Plots & Field Days
- Equipment Purchase Assistance Funds
- Program incentives for ag retailers for program support

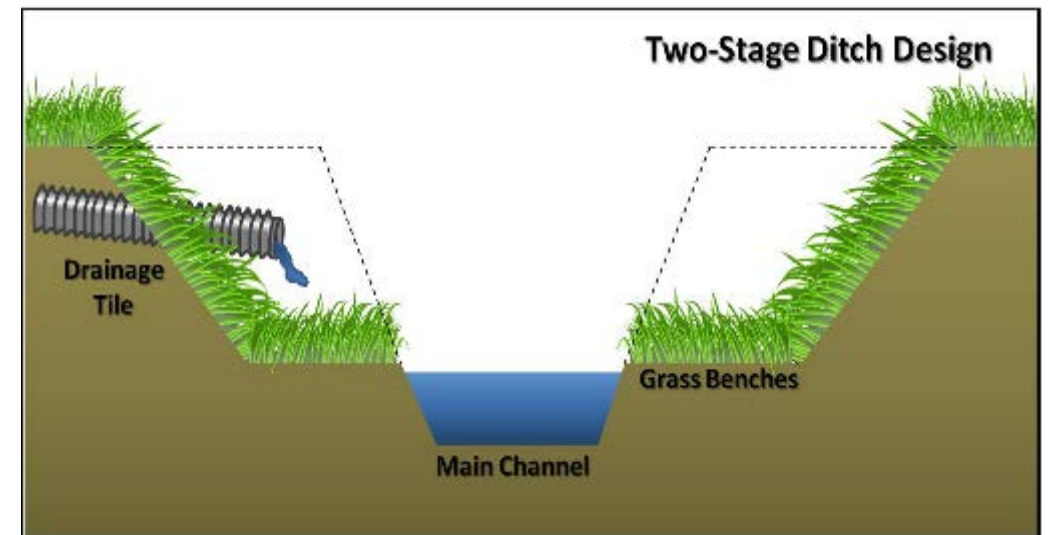
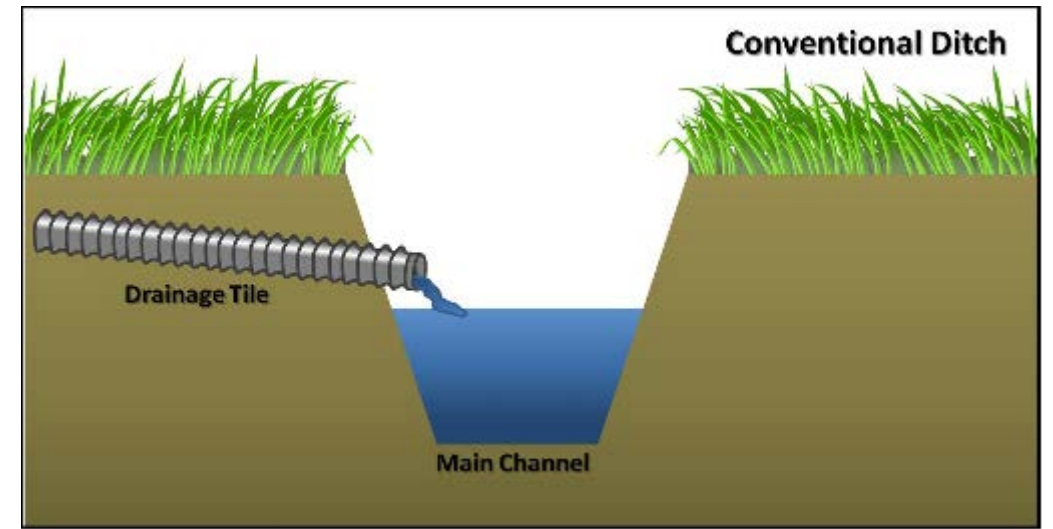


Department of
Agriculture



2-Stage Ditch Program

- ODA has received 12 applications for 2-Stage ditch construction projects in the current H2Ohio project area
 - 12 Project applications approved
 - 6 SWCD and 6 County Engineer
 - 7 Counties represented
 - 44,587 Feet of ditch
 - 18,156 Acres of drainage area
 - \$4,195,026 Encumbered
- ODA had committed up to \$5 million dollars to this effort
 - Additional applications could be accepted in the future



Department of
Agriculture



Equipment Purchase Assistance Funds

- ODA has set aside \$2,000,000 to increase producer access to equipment to implement H2Ohio BMPS
- Program would reimburse the interest paid by the producer to purchase certain types of equipment to implement:
 - Subsurface phosphorus placement
 - Inject or place manure below the soil surface
 - Interseed cover crops into a growing crop
- The producer will be eligible for funding for up to 5 years

More Information to come



Department of
Agriculture



Demonstration Plots & Field Days

- ODA is working to develop a series of demonstration sites and research plots in the WLEB watershed
- Will include up to 6 demonstration sites with an annual field day, as well as an informational meetings
- Will also include funding for research to assess the impact of varying phosphorus applications



Department of
Agriculture



Where are we going?

Goals: Maintain Practice Integrity while simplifying the Practice Standards

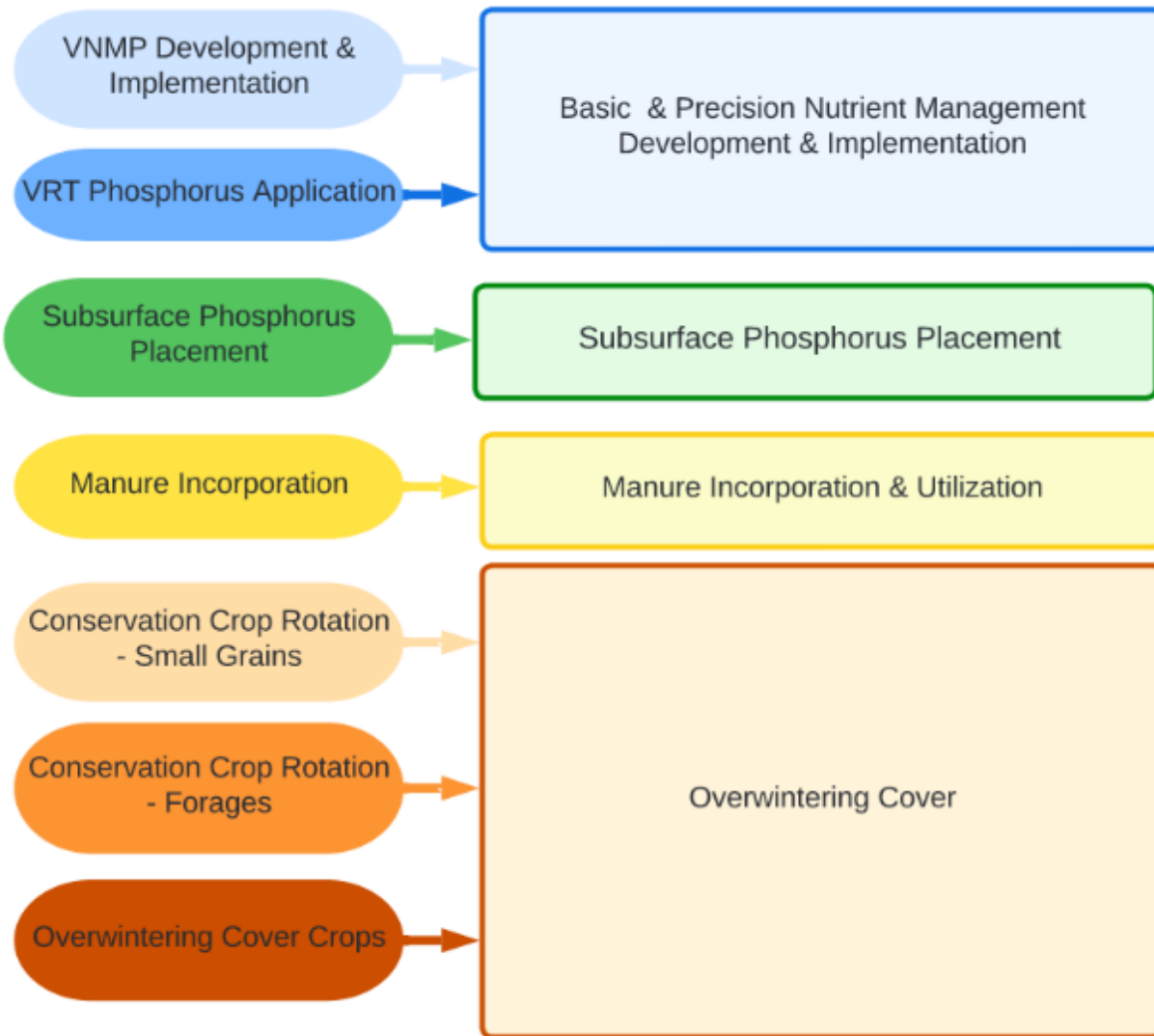
- Improve consistency County to County
- Accountability
 - Additional Quality Assurance
 - Improved Data Management
- Science-based reduction estimates
 - Field-level data
 - Data Quality

There will be a large learning curve from producers, retailers & SWCD



Department of
Agriculture





Proposed Practice Modifications

- ODA staff are developing edits to the existing H2Ohio BMPs for future program offerings
- ODA will maintain the Voluntary Nutrient Management Plan (VNMP) as the foundation of the program
- Practices will be streamlined for easier program enrollment and delivery
- Practice requirements will be relaxed to provide producers more options to implement practices



Department of
Agriculture



MyFarms

- Options for Improved Nutrient Planning
- Software integrations
 - Connect directly to John Deere & Climate Fieldview for field boundaries, yield data etc.
 - AWS – Amazon Web Services
- Field level practice reporting
 - Field-to-Market FieldPrint and other assessment methods using models



Department of
Agriculture



Questions?

Terry Mescher

Terry.Mescher@agri.ohio.gov

614-395-6210



Department of
Agriculture

