

# LORAIN SOIL & WATER CONSERVATION DISTRICT

[www.lorainswcd.com](http://www.lorainswcd.com)

VOLUME 13, ISSUE 30

LORAIN SOIL & WATER  
CONSERVATION  
DISTRICT

**THE LATITUDE / LONGITUDE**  
**41 ° 21 '09 " N . - 82 ° 08 " 55 " W .**

WINTER/ SPRING 2016

## MISSION STATEMENT

The Lorain Soil & Water Conservation District provides leadership in a partnership effort to help people conserve, maintain and improve the natural resources and environment in Lorain County.

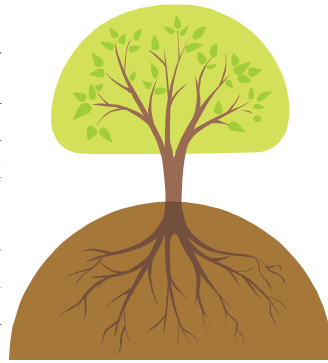


## **INSIDE THIS ISSUE:**

SOIL CONSERVATIONIST'S COLUMN	2
SCHOLARSHIPS & BIG TREE CONTEST	3
SEEDLING SALE DESCRIPTIONS	4
SEEDLING SALE ORDER FORM	5
BD MEMBERS & STRAW BLOWER	6
NEW EMPLOYEES & FISH SALE INFO	7
FISH SALE ORDER FORM	8

## LORAIN SWCD'S 2016 SEEDLING SALE

The 2016 Annual Conservation Seedling Sale is now underway at the Lorain Soil & Water Conservation District office. Windbreak stock can now be ordered. Reserve the items that you would like now. They will be ready for pick-up in time for spring planting. Orders are accepted on a first come, first serve basis since there are a limited number of each packet available.



Extra seedlings or packets will be for sale during pick-up times. All stock is inspected and offered without warranty. The District is not responsible for survival of the seedlings after pickup.

Please check and inspect your order **before** you leave the pick-up point.

For best results and survival rates, seedlings should be planted as soon as possible after pick-up. No refunds will be made on orders not picked up. Do not call Grobe Fruit Farm. Visit our website @ [lorainswcd.com](http://lorainswcd.com) (News>Newsletter) to print an order form.

***Order pick-up date is:***

**One day only**

**Friday, April 15, 2016**

**11:00 a.m. to 6:00 p.m.**

**Pick-up is at Grobe Fruit Farm**

**43875 Telegraph Road (SR 113)**

**Elyria**

**Most seedlings will easily fit in a grocery bag.**

**Payment must accompany order.**  
**Orders will be taken until stock sells out — so order early!**

Reminder post cards will be sent out one week prior to pick-up.

## Resource Conservationist's Column—Rocemi Morales



The U.S. Department of Agriculture's Natural Resources Conservation Service (NRCS) now has 2016 Federal conservation program funds available for Ohio farmers and forestland owners.

Farmers and forestland owners may apply for funding under the Environmental Quality Incentives Program (EQIP) at any time throughout the year, but application selections for funding are made at specific times. The first 2016 application deadline is February 19.

EQIP provides financial assistance for conservation management and structures (practices) and technical assistance to develop a conservation plan. The conservation plan and practices help agricultural producers and forestland owners improve the natural resources on their property. These practices also benefit the public by improving water quality, reducing soil erosion, and improving soil health, wildlife habitat, and conserving energy.

Eligible producers who sign up for EQIP may receive a payment based on the statewide average cost for installing planned conservation practices. Socially disadvantaged, limited resource, and beginning farmers and ranchers are eligible for a higher payment rate. Veteran farmers who are also new or beginning farmers receive the higher payment rate.

Applications for EQIP submitted by entities, such as farmers applying as a corporation, must register with the Central Contractor Registration (CCR), a process that can take up to 3 weeks. Information about CCR requirements, including obtaining a Data Universal Number System (DUNS) number, is posted on the NRCS website at [www.nrcs.usda.gov/programs/farmland](http://www.nrcs.usda.gov/programs/farmland).

Dedicated EQIP funds are available for conservation practices targeting On-Farm Energy, Organic Systems, High Tunnel Systems, Honeybee and other wildlife habitat, as well as several landscape-based initiatives, including:

- \*Livestock EQIP – Livestock farmers statewide (includes pastured livestock)
- \*Cropland EQIP – Crop farmers statewide EXCEPT those farming in the Western Lake Erie Basin Watershed (future 2016 EQIP funding will be available for crop farmers in this watershed)
- \*Forestry EQIP – Private forestland owners statewide

Additional EQIP funding will be available in 2016 for other landscape-based initiatives and priority natural resource issues. NRCS will post announcements of these future 2016 EQIP application ranking deadline dates on the Ohio NRCS website at <http://www.oh.nrcs.usda.gov>.

Landowners should make an appointment with their local NRCS office as soon as possible to begin the conservation planning process. USDA Service Center is located at 42110 Russia Rd Elyria, OH 44035 and the contact numbers are 440-326-5806 with Drew DeMatteo, Derrick Harmon or Rocemi Morales.

## NE OHIO AREA II ENVIROTHON



The Envirothon is an outdoor academic competition in which teams of high school students test their knowledge of soils, wildlife, aquatic ecology, forestry and current environmental issues. Each team consists of five students, all from the same high school. They work cooperatively with each other to answer questions at five test stations. The tests are graded and the top four teams are recognized. This year the focus is "Invasive Species". The Stark SWCD is hosting this year's Envirothon on April 28, 2016 at Sippo Lake Exploration Gateway in Canton, Ohio. All Envirothon participants will receive t-shirts and the top four teams move on to the state competition. For more information call the SWCD office at 440-326-5800 or pick up an informational packet from any Lorain County high school counselor.

## JOEL MCROBERTS MEMORIAL SCHOLARSHIP

The Joel McRoberts Memorial Scholarship was created in 1998 in memory of Joel, District Technician with the Lorain Soil & Water Conservation District for 20 years. Joel died in 1997 of leukemia. The scholarship was created at the request of his widow Connie McRoberts, of Litchfield.

Joel McRoberts was a big supporter of agriculture and higher education. Although he never attended college, he understood the value of education and always encouraged students to further their education and better themselves. Joel was devoted to farming and the farmers in Lorain County. He had a deep appreciation of our natural resources and their protection. This memorial scholarship is administered in his honor.



The scholarship is available to any student in Lorain County who will be majoring in an agriculture or natural resources management related field at any two or four year college. They must have a minimum GPA of 2.5.

With the generosity of the individuals in Lorain County the scholarship has grown with time, expanding to include two awards annually; one for an incoming college freshman and one for any current college student with at least one year completed.

### JOEL MCROBERTS MEMORIAL SCHOLARSHIP

This scholarship is offered by the Lorain Soil & Water Conservation District. The scholarship amount is \$1,000.00. High school seniors (Lorain county residents) who will enroll in an agricultural or natural resource related two or four-year course of study are eligible to apply. **Application deadline is April 30, 2016.**

### JOEL MCROBERTS CONTINUING EDUCATION SCHOLARSHIP

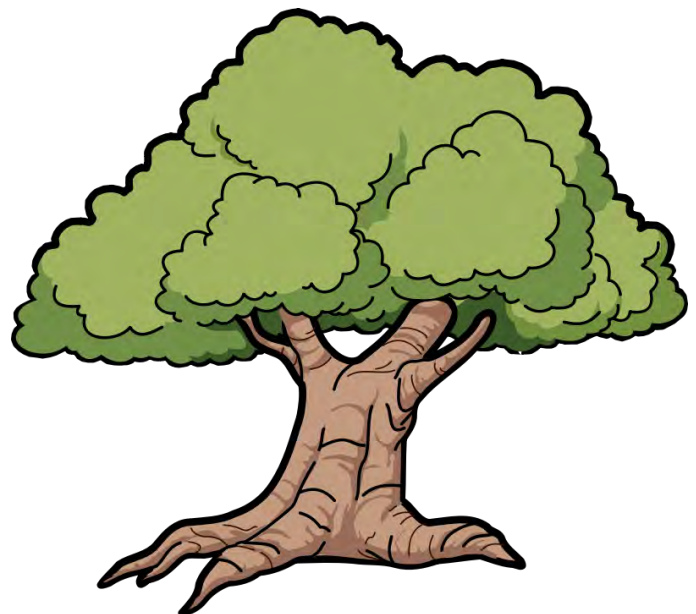
This scholarship is offered by the Lorain Soil & Water Conservation District. The scholarship amount is \$1,000.00. Applicants (Lorain county residents) must be enrolled as a full-time student in a two or four-year course of study, in an agricultural or natural resource related field. **Application deadline is July 31, 2016.**

Applications can be requested by visiting our website: [lorainswcd.com](http://lorainswcd.com), from your high school guidance counselor, from the Lorain SWCD office, 42110 Russia Rd., Elyria, OH, 44035, or by calling (440) 326-5800.



**Big Tree  
Contest  
coming in  
2016**

**Watch for information about our first Big Tree Contest coming this summer. Details have not been finalized but when they are, we will post them on our website at [www.lorainswcd.com](http://www.lorainswcd.com) and on our Facebook page.**



## Evergreens

**Red Pine.** A long needled pine native to the Lake States and New England. Best used for reforestation and windbreaks north of Missouri River. Grows to 80 ft.

**Pitch X Loblolly Pine.** This hybrid pine combines the cold hardiness and drought tolerance of pitch pine with the larger mature size, moist soil tolerance, and fast growth of loblolly pine. Develops a dense, extensive root system that helps it adapt to extreme soil conditions. The long, naturally shed needles are used for pine straw mulch in the landscaping industry. Does best in full sun to partial shade. Grows to 60 ft.



**Norway Spruce.** Excellent tree for windbreak and wildlife cover. Although not

immune to deer damage, deer generally leave this evergreen alone. This fast-growing spruce grows best on well-drained soils and will tolerate a lot of shade. It will retain its dense drooping branches as the tree matures. Grows to 50 ft.

**Eastern Red Cedar.** Eastern red cedar's aromatic wood is valuable for closet lining and novelties. Excellent for wildlife and windbreak plantings. Red cedar may become an invasive problem in your pastures and idle fields. It spreads easily. Grows to 60 ft.

## Hardwood Species

**Bald Cypress.** Large trees that may live more than 1,000 years. Commonly associated with southeastern swamps, but adapt easily to a wide range of sites. Young trees grow rapidly on good sites and may reach 20 feet in height in 10 years. Extremely durable wood. Grows 80-100 ft.

## Deciduous Trees

**Pin Oak.** This fast-growing oak grows naturally on poorly drained, heavy bottom-land sites statewide. It is often used for landscaping as it will grow well on a wide variety of sites, from wet to dry. The small

acorns are eaten by many mammals and birds, and they are an important winter food for migrating waterfowl. Grows 70-80 ft.

**River Birch.** A small to medium sized streambank tree useful for



bank stabilization. Peeling, flaking bark gives the tree an attractive appearance in winter. Grows to 60 ft.

**Sweet Gum.** Does best in deep, moist soils. The brilliant fall colors

& large spreading size make sweet gum a sought-after species of shade tree for landscaping although some consider the multitude of gumballs to be a nuisance to keep cleaned up. It is one of the last species to drop its leaves in the fall. Grows 80-150ft. & may spread to 45 ft. wide.

**Swamp White Oak.** A fairly fast-growing, medium sized tree that may reach a diameter of 3 feet. Grows along low hills and stream bottoms, but is adaptable to a wide variety of sites. Despite its name, this species does not naturally grow in swamps. The acorns are one of the favored fall foods for deer, turkey, and many other wildlife species. Grows to 70 ft.

**Mixed Hickory.** This mix is dominated by shagbark, but also includes bitternut, pignut, black, and shellbark hickories. Good selection for wildlife and reforestation projects where a variety of nut sizes and tree forms is desired. Grows to 70 ft.

## Shrubs

**Black Chokeberry.** This small shrub, with a spread of 5 to 6 feet, has large, shiny dark-green leaves that turn purple to orange and red in the fall. Flowers are white with five petals; about 1/2 inch across. The tart purplish-black fruit is about 1/4 inch across and is best used to make jams or jellies. The juice is very high in vitamin C and various antioxidants. Does best in full sun or partial shade. Will grow on a wide variety of soils from wet to very dry. Grows to 10 ft.

**Black Haw.** This shrub is native statewide. Leaves are dark-green and flowers are rounded white clusters 2 to 4 inches across. Fruit is bluish-black clusters of 1/2 inch-long berries, each containing one large seed. A variety of animals feed on the fruits, leaves, and stems. Grows well in both sun or shade. Grows to 20 ft.

## Perennials

**Black-Eyed Susan.** A very vigorous and compact variety of Black-Eyed Susan, with exceptionally bright golden flowers, July into fall. Height and spread 2 to 2 and 1/2 ft. Easily reseeds. Seeds attract wild birds, a favorite of wild turkeys. Spectacular in mass plantings, use along fences, driveways walks and property boundaries.



**Purple Coneflower.** Grows to a height of 24-36" with a spread of 12-18". The large, daisy-like flowers grow on sturdy stems ranging in height from 3-5'. The flower petals range in color from purple to lavender. Blooms all summer and into autumn. Plant in full sun or partial shade. Prefers well drained fertile soil, but is drought tolerant and adaptable to heat, poor soils, and high humidity. Maintenance free. A butterfly favorite.

**Rain garden kit.** *First time offered.* Kit contains an assortment of ten (10) perennial native plants in 1.5 gallon pots which don't mind getting "wet feet". Rain gardens are built in depressions which are designed to capture and filter storm water runoff from impervious surfaces around the home, such as rooftops and driveways. A "Rain Garden Manual for Homeowners" is available at the SWCD office at no cost. For additional resources visit <http://www.centralohioraingardens.org>

# 2016 SEEDLING SALE ORDER FORM

*Please print clearly.*

Name \_\_\_\_\_ Phone (required) \_\_\_\_\_

Address \_\_\_\_\_ City \_\_\_\_\_ Zip \_\_\_\_\_

# of pkts	# per packet	Name	Size	Cost	Total
	5 seedlings	Red Pine	3-0 (size varies)	8.00	
	5 seedlings	Pitch X Loblolly Pine	3-0 (size varies)	8.00	
	5 seedlings	Norway Spruce	3-0 (size varies)	8.00	
	5 seedlings	Eastern Red Cedar	3-0 (size varies)	8.00	
	5 seedlings	Bald Cypress	12-18"	8.00	
	5 seedlings	Pin Oak	12-18"	8.00	
	5 seedlings	River Birch	12-18"	8.00	
	5 seedlings	Sweet Gum	12-18"	8.00	
	5 seedlings	Swamp White Oak	12-18"	8.00	
	5 seedlings	Mixed Hickory	12-18"	8.00	
	5 seedlings	Black Chokeberry	12-15"	8.00	
	5 seedlings	Black Haw	12-15"	8.00	
	each	Black-Eyed Susan	3" pot	3.00	
	each	Purple Coneflower	3" pot	3.00	
	Rain Garden Kit	Cardinal Flower, Swamp Milkweed, Blue Vervain, Monkey Flower, Purple Coneflower, Wild Bergamot, Yellow Coneflower, Ironweed, Ohio Spiderwort, March Blazingstar	ten (10) 1.5 gallon pots	80.00	
				<b>TOTAL</b>	<b>\$</b>

Return this form with payment to:

*Orders will be taken until stock sells out SO ORDER EARLY*

Lorain SWCD

42110 Russia Road

Elyria OH 44035-6813 440-326-5800

OFFICE USE ONLY

Date \_\_\_\_\_ Rec. No. \_\_\_\_\_

Check No. \_\_\_\_\_ Cash \_\_\_\_\_



John Grills being welcomed by Will Schlechter



Outgoing Board member John Born

## WELCOME NEW BOARD MEMBER

The Lorain SWCD welcomed their newest supervisor at their first official board meeting on January 27, 2016. John Grills was elected to a 3-year term at the September 3, 2015 Annual Meeting. He will be serving his term alongside fellow supervisors Will Schlechter, J. Lawry Babitt, Jessica Duplaga & Bob Ternes, Jr. As supervisors, they will help oversee the operations of the District.

## THANK YOU FOR YOUR SERVICE!

Thank you to John Born for serving as a member of the Lorain SWCD Board of Supervisors from 2004-2015. Your service was greatly appreciated and you will be missed!

## STRAW BLOWER FOR RENT

The Lorain SWCD has received a grant from the 2009 Great Lakes Basin Commission for Soil Erosion and Sediment Control. We were able to purchase a commercial Tailgate Straw-Mulcher to rent to landowners in Lorain County. The mulcher is designed for all mid to large-scale commercial and residential jobs with a capacity of shooting up to seven tons of straw per hour and shooting up to 35 feet out. The blower/mulcher is mounted on a trailer for easy transportation. Call the District office for more information on rental 440-326-5800.



## District Hires Urban Erosion & Stormwater Specialist; Secretary

### New Urban Erosion & Stormwater Specialist at the District:

Caroline Cicerchi was hired in August by the District to facilitate the Erosion and Sediment Control Rules. She works with developers, builders, homeowners, and various members of the county to provide technical assistance in implementing conservation management practices on construction sites.

Caroline received her bachelor's degree in environmental conservation biology. She is from Westerville, Ohio and has always had a passion for the outdoors. Her favorite activities include hiking, camping, and kayaking. Caroline has a background in stream ecology through her research at The Wilds and coursework

with the Ohio EPA conducting headwater habitat assessments. She enjoys involvement in environmental education outreach and has previously volunteered with Summit County Metroparks. Her goal in working with the District is to advance her technical skills while continuing to contribute to the conservation efforts of Lorain County.



**New part-time Secretary:** The Lorain SWCD has recently employed Lynne Parsh as part-time secretary. Lynne and her husband Dave live in Oberlin and previously owned Dave's Army Navy store. She has worked for Visit Lorain County and Oberlin College. Lynne is actively involved with Girl Scouts of Northeast Ohio and is Vice-Chair of the Oberlin Athletic Booster Club. Lynne and Dave have two adult children and one daughter in Oberlin High School. Lynne is currently working in the office Monday through Wednesday. She can be reached at the Lorain SWCD office between 8:00 a.m. to 4:30 p.m. at 440-326-5800.



## FISH SALE

We are taking orders for fingerling-size fish for stocking your ponds.

**TUESDAY**

**MAY 10, 2016**

**10:00 AM–11:30 AM**

**AG CENTER PARKING LOT**

**42110 RUSSIA ROAD**

The truck from Fender's Fish Hatchery of Baltic, Ohio, will be here for delivery on Tuesday, May 10, 2016, from 10:00 a.m. until 11:30 a.m. to distribute orders.

Largemouth Bass, Bluegill, Channel Catfish, Yellow Perch, Redear Sunfish (Shellcrackers), Fathead Minnows, Black Crappie, and Triploid White Amur are available.

You will need to bring a container

filled with **your** pond water to pick up your order—approximately 5 gallons of water for each 100 fingerling size fish. We suggest using a trash can with a new plastic liner—then put in the pond water so the top of the bag can be tied shut for transportation. Remember, the Amur are 10-12" long and need a suitable container.

Triploid White Amur are stocked to control leafy pond vegetation. Algae is not a preferred food. Since the Amur were first stocked in Ohio the fall of 1987, you may need to replace your Amur. The life expectancy is in the 10 to 12 year range. Recommended stocking rates for the Amur are 2 to 5, per surface acre of water, based on how much weed cover is in the pond at its worst point over the summer.

Other stocking recommendations are 100 Largemouth Bass and 500 Bluegill per surface acre of pond

area. Yellow Perch and Redear Sunfish (Shellcrackers) can be stocked at the same rate as Largemouth Bass. Channel Catfish can also be stocked in ponds that are 1/2 acre or larger. Though they will not reproduce in a pond, they do provide excellent fishing. The stocking rate is 50 per surface acre of pond area. A 4-6" long Catfish stocked this spring will double in size by next spring.

**Order Deadline:**

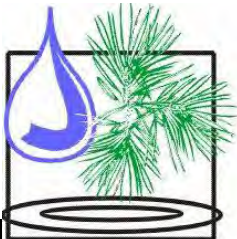
**Friday, May 6, 2016**

**Remember to enclose payment with your order. Thanks!**

**Order form**

**on back page.**





**LORAIN SOIL & WATER CONSERVATION DISTRICT**

42110 Russia Rd., Elyria Ohio 44035  
 Ph: 440-326-5800 Fax: 440-326-5807  
 www.lorainswcd.com

PRSR STD  
 US POSTAGE  
**PAID**  
 ELYRIA OH  
 PERMIT 22

DISTRICT SUPERVISORS

Will Schlechter, Chairman  
 J. Lawry Babitt, Vice-Chairman  
 Jessica Duplaga, Secretary  
 Robert Ternes, Jr., Treasurer  
 John Grills, Member

ASSOCIATE MEMBERS

Ron Baumann  
 Neil Breyley  
 Dan Buttler  
 John Forthofer  
 Dave Manning  
 Alan Pitts

DISTRICT PERSONNEL

Caroline Cicerchi, Urban Erosion & Stormwater Specialist  
 Sandy Denes, Administrative Assistant  
 Lynne Parsh, Secretary

Karl Schneider, Natural Resources Coordinator

NATURAL RESOURCES CONSERVATION SERVICE

Derrick Harmon, District Conservationist for Lorain & Medina County  
 Rocemi Morales, Resource Conservationist  
 Drew DeMatteo, Resource Conservationist  
 Dale Barr, Soil Conservationist Technician; Bob Pandy, Technician

LORAIN COUNTY COMMISSIONERS

Ted Kalo, Lori Kokoski, Matt Lundy

**FISH SALE ORDER FORM**

**Order deadline date: Friday, May 6, 2016**

Mail and return with payment to:

Lorain SWCD

42110 Russia Rd., Elyria, OH 44035

Name : \_\_\_\_\_

Address: \_\_\_\_\_

City: \_\_\_\_\_ Zip: \_\_\_\_\_

Daytime phone # (required): \_\_\_\_\_ County where Amur are stocked: \_\_\_\_\_

<u>Species</u>	<u>Size</u>	<u>Price</u>	<u># ordered</u>	<u>\$ Total</u>
Largemouth Bass	2-4 "	\$0.90	_____	_____
Bluegill	2-4 "	\$0.75	_____	_____
Channel Catfish	4-6 "	\$0.80	_____	_____
Black Crappie	2-4"	\$0.90	_____	_____
Redear Sunfish (Shellcracker)	2-4 "	\$0.90	_____	_____
Yellow Perch	4-6 "	\$0.80	_____	_____
Fathead Minnow	per 100	\$7.00	_____	_____
Triploid White Amur	10-12 "	\$13.00	_____	_____

**TOTAL** \$ \_\_\_\_\_